

John Deere 544J Wheel Loader Specs

Engine

Type	John Deere PowerTech 6068H complies with EPA Tier 2 regulations	
Cylinders	6	
Valves per Cylinder	2	
Displacement	414 cu. in. (6.8 L)	
Net Peak Power (ISO9249)	160 hp (116 kW) @ 1,900 rpm	
Net Peak Torque (ISO9249)	485 lb. ft. (650 Nm) @ 1,400 rpm	
Aspiration	turbocharged and charge air cooled	
Air Cleaner	dual element dry type; restriction indicator in cab	
Fan Drive	hydraulically driven, proportionally controlled, fan aft of coolers	
Electrical System	24 volt with 80-amp alternator	
Batteries (two 12 volt)	950 CCA	

Transmission

Travel Speeds	Forward	Reverse
Gear 1	4.3 mph (6.9 km/h)	4.5 mph (7.3 km/h)
Gear 2	7.4 mph (11.9 km/h)	7.8 mph (12.6 km/h)
Gear 3	14.2 mph (22.8 km/h)	15.0 mph (24.1 km/h)
Gear 4	23.8 mph (38.4 km/h)	

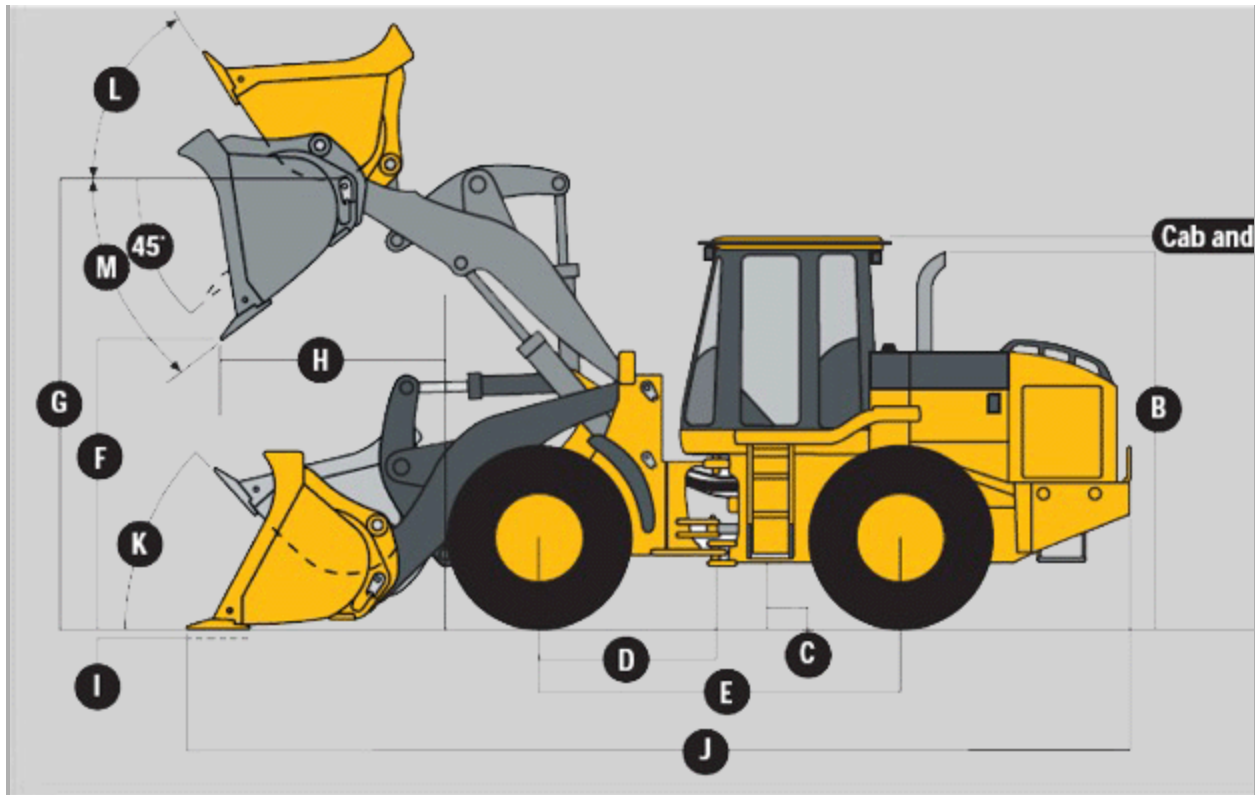
Refill Capacities

Fuel Tank (with ground level fueling)	85 gal. (322 L)
Cooling System	22 qt. (21 L)
Engine Oil, Including Filter	19.5 qt. (18.5 L)
Transmission, Including Filter	19.5 qt. (18.5 L)
Differential (front and rear, each axle)	19 qt. (18 L)
Hydraulic Reservoir and Filters	25.5 gal. (96.5 L)
Wet-Disc Parking Brake	10 oz. (0.3 L)

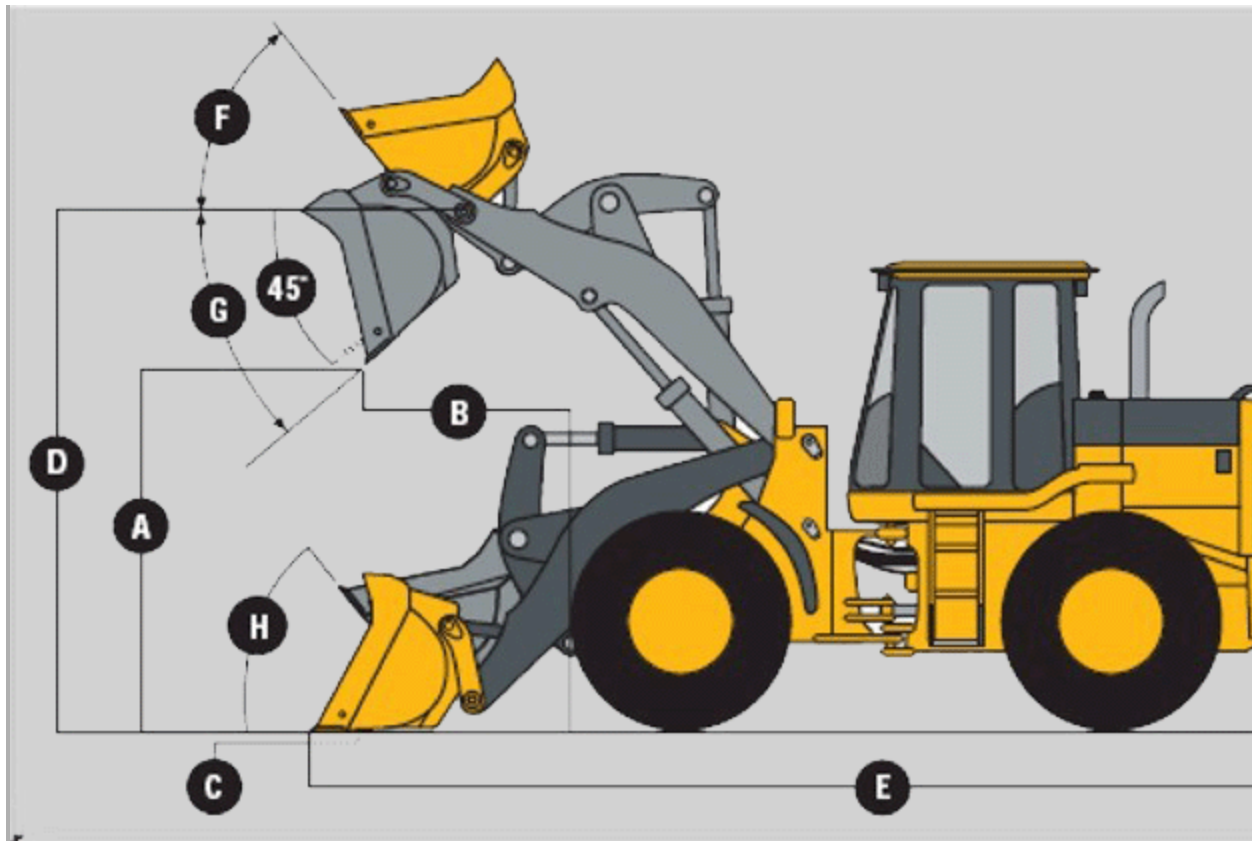
Hydraulic System / Steering

2.5 cu. yd. (1.9 m³) bucket with bolt on cutting edge

Maximum Lift Capacity	Standard Z Bar	High Lift Z Bar
Lift at Ground Level	29,596 lb (13 422 kg)	26,074 lb (11 835 kg)
Lift at Maximum Height	14,904 lb (6759 kg)	12,996 lb (5894 kg)

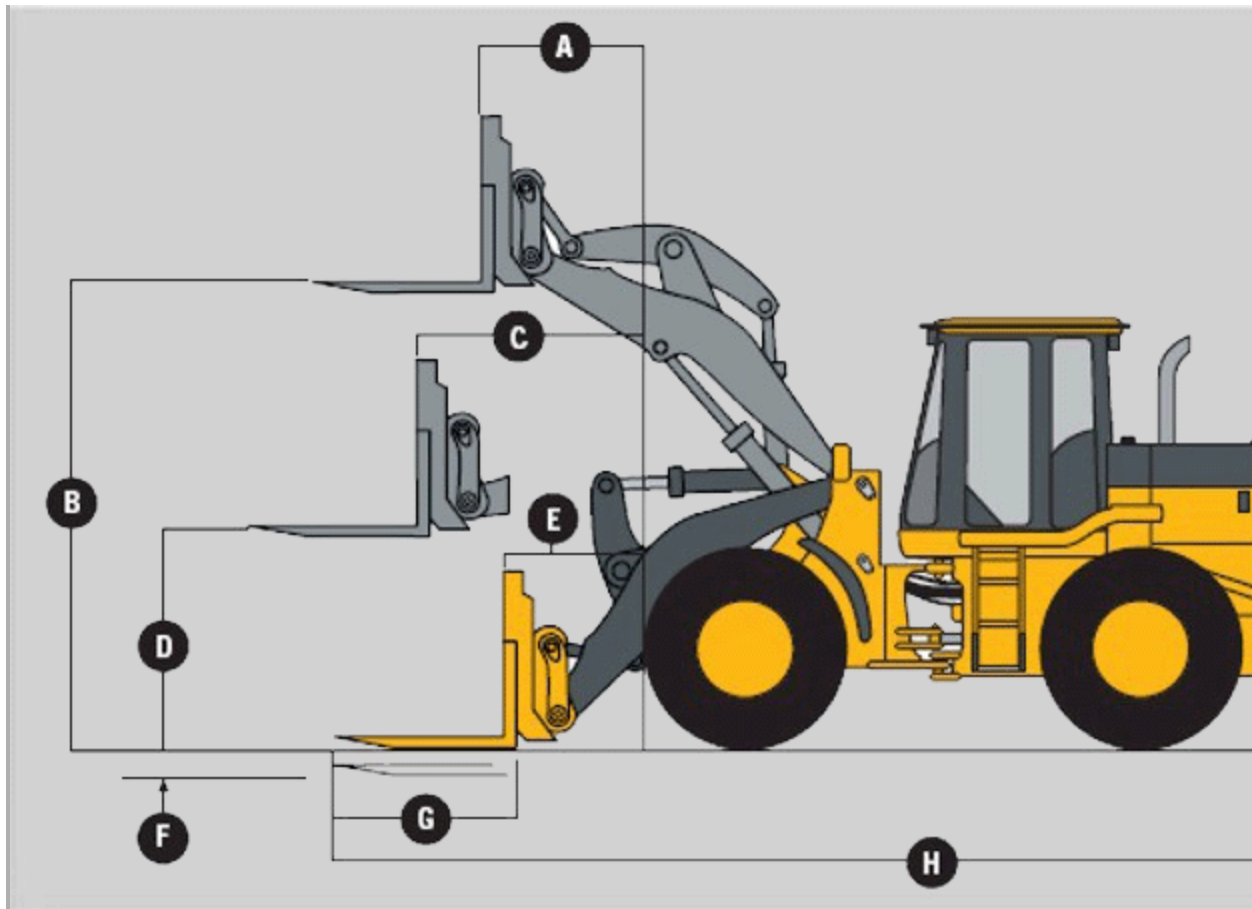


Dimensions (with Pin On Bucket)	Standard Z-Bar	High-Lift Z Bar
A) Height to Top of Cab	10 ft. 7.6 in. (3241 mm)	10 ft. 7.6 in. (3241 mm)
B) Height to Top of Exhaust	10 ft. 7 in. (3227 mm)	10 ft. 7 in. (3227 mm)
C) Ground Clearance	17.7 in. (450.5 mm)	17.7 in. (450.5 mm)
D) Length from Centerline to Front Axle	57.1 in. (1450 mm)	57.1 in. (1450 mm)
E) Wheelbase	114.2 in. (2900 mm)	114.2 in. (2900 mm)
F) Dump Clearance	see below	see below
G) Height to Hinge Pin, Fully Raised	12 ft. 7 in. (3836 mm)	13 ft. 9 in. (4188 mm)
H) Dump Reach	see below	see below
I) Maximum Digging Depth	3.25 in. (83 mm)	6.5 in. (165 mm)
J) Overall Length	see below	see below
K) Maximum Rollback at Ground Level	41 degrees	41 degrees
L) Maximum Rollback, Boom Fully Raised	55 degrees	55 degrees
M) Maximum Bucket Angle, Fully Raised	50 degrees	50 degrees



Dimensions (with Quick-Coupler and Bucket)

	Standard Z Bar	High Lift Z Bar
A) Dump Clearance	see below	see below
B) Dump Reach	see below	see below
C) Maximum Digging Depth	5.5 in. (139 mm)	8.7 in. (221 mm)
D) Height to Hinge Pin, Fully Raised	12 ft. 7 in. (3836 mm)	13 ft. 9 in. (4188 mm)
E) Overall Length	see below	see below
F) Maximum Rollback, Boom Fully Raised	55 degrees	49 degrees
G) Maximum Bucket Discharge Angle, Fully Raised	55 degrees	51 degrees
H) Maximum Rollback at Ground Level	42 degrees	41 degrees



Dimensions (with Quick-Coupler and Construction Fork)

	Standard Z Bar	High Lift Z Bar
A) Reach, Fully Raised	2 ft. 6 in. (758 mm)	2 ft. 6 in. (760 mm)
B) Fork Height, Fully Raised	11 ft. 9 in. (3574 mm)	12 ft. 11 in. (3926 mm)
C) Maximum Reach, Fork Level	5 ft. 1 in. (1546 mm)	5 ft. 11 in. (1810 mm)
D) Fork Height, Maximum Reach	5 ft. 7 in. (1705 mm)	5 ft. 7 in. (1705 mm)
E) Reach, Ground Level	3 ft. 0 in. (912 mm)	4 ft. 1 in. (1249 mm)
F) Depth Below Ground	1.2 in. (30 mm)	1.2 in. (30 mm)
G) Tine Length	see below	see below
H) Overall Length	see below	see below

Standard Z-Bar Information with Pin On Bucket

Bucket Type/Size	General Purpose w/ Bolt on Edge	
Capacity, Heaped SAE	3.0 cu. yd. (2.3 m ³)	2.5 cu. yd. (1.9 m ³)
Capacity, Struck SAE	2.6 cu. yd. (2.0 m ³)	2.1 cu. yd. (1.6 m ³)
Bucket Weight	2,617 lb (1187 kg)	2,061 lb (935 kg)
Bucket Width	105.9 in. (2690 mm)	100.4 in. (2550 mm)
Breakout Force, SAE J732C	24,250 lb (11 000 kg)	26,770 lb (12 143 kg)
Tipping Load, Straight	21,993 lb (9976 kg)	22,798 lb (10 341 kg)

Tipping Load, 40-Degree Full Turn, SAE	18,653 lb (8461 kg)	19,422 lb (8810 kg)
Reach, 45-Degree Dump, 7 ft (2.13 m) Clearance	57.2 in. (1453 mm)	56.22 in. (1428 mm)
Reach, 45-Degree Discharge, Full Height	37.0 in. (939 mm)	34.7 in. (882 mm)
Dump Clearance, 45-Degree Full Height	111 in. (2837 mm)	114 in. (2904 mm)
Overall Length, Bucket on Ground	23 ft. 11 in. (7281 mm)	23 ft. 7 in. (7184 mm)
Loader Clearance Circle, Bucket in Carry Position	38 ft. 2 in. (11 630 mm)	37 ft. 7 in. (11 445 mm)
Operating Weight	27,703 lb (12 566 kg)	27,149 lb (12 315 kg)

Standard Z-Bar Information with Quick Coupler and Bucket

Bucket Type/Size	General Purpose w/ Bolt on Edge	
Capacity, Heaped SAE	3.0 cu. yd. (2.3 m ³)	2.5 cu. yd. (1.9 m ³)
Capacity, Struck SAE	2.6 cu. yd. (2.0 m ³)	2.1 cu. yd. (1.6 m ³)
Bucket Weight	3,206 lb (1454 kg)	2,879 lb (1306 kg)
Bucket Width	105.9 in. (2690 mm)	100.4 in. (2550 mm)
Breakout Force, SAE J732C	19,039 lb (8636 kg)	18,937 lb (8590 kg)
Tipping Load, Straight	18,163 lb (8237 kg)	20,741 lb (9408 kg)
Tipping Load, 40-Degree Full Turn, SAE	15,314 lb (6945 kg)	17,548 lb (7960 kg)
Reach, 45-Degree Dump, 7 ft (2.13 m) Clearance	59.0 in. (1499 mm)	61.4 in. (1560 mm)
Reach, 45-Degree Discharge, Full Height	40.3 in. (1099 mm)	43.7 in. (1109 mm)
Dump Clearance, 45-Degree Full Height	103.6 in. (2632 mm)	107.0 in. (2718 mm)
Overall Length, Bucket on Ground	24 ft. 10 in. (7581 mm)	23 ft. 1 in. (7475 mm)
Loader Clearance Circle, Bucket in Carry Position	37 ft. 10 in. (11 575 mm)	38 ft. 3 in. (11 669 mm)
Operating Weight	28,299 lb (12 834 kg)	27,967 lb (12 686 kg)

Standard Z-Bar with Quick Coupler and Construction Fork

Tine Length	48 in. (1220 mm)	60 in. (1525 mm)
Overall Length	25 ft. 7 in. (7802 mm)	26 ft. 7 in. (8106 mm)
Tipping Load, Straight (fork level, load centered 36 in. (914 mm) on tine)	14,859 lb (6740 kg)	14,002 lb (6351 kg)
Tipping Load, 40 deg. Full Turn (fork level, load centered 36 in (914 mm) on tine)	12,632 lb (5730 kg)	11,887 lb (5392 kg)
Operating Weight	27,097 lb (12 289 kg)	27,199 lb (12 335 kg)

High-Lift Z-Bar Pin-On Type Bucket

Bucket Type/Size	General Purpose w/ Bolt on Edge	
Capacity, Heaped SAE	3.0 cu. yd. (2.3 m ³)	2.5 cu. yd. (1.9 m ³)
Capacity, Struck SAE	2.6 cu. yd. (2.0 m ³)	2.1 cu. yd. (1.6 m ³)
Bucket Weight	2,396 lb (1087 kg)	2,061 lb (935 kg)
Bucket Width	105.9 in. (2690 mm)	100.4 in. (2550 mm)
Breakout Force, SAE J732C	22,394 lb (10 158 kg)	24,671 lb (11 191 kg)
Tipping Load, Straight	18,713 lb (8488 kg)	19,380 lb (8791 kg)
Tipping Load, 40-Degree Full Turn, SAE	15,815 lb (7174 kg)	16,455 lb (7464 kg)
Reach, 45-Degree Dump, 7 ft (2.13 m) Clearance	68.7 in. (1744 mm)	67.1 in. (1705 mm)
Reach, 45-Degree Discharge, Full Height	37.0 in. (941 mm)	34.5 in. (876 mm)
Dump Clearance, 45-Degree Full Height	125.6 in. (3189 mm)	128.0 in. (3249 mm)
Overall Length, Bucket on Ground	24 ft. 11 in. (7612 mm)	24 ft. 8 in. (7516 mm)
Loader Clearance Circle, Bucket in Carry Position	39 ft. 2 in. (11 942 mm)	38 ft. 7 in. (11 751 mm)
Operating Weight	27,855 lb (12 635 kg)	27,302 lb (12 384 kg)

High-Lift Z-Bar Quick Coupler Bucket

Bucket Type/Size	General Purpose w/ Bolt on Edge	
Capacity, Heaped SAE	3.0 cu. yd. (2.3 m ³)	2.5 cu. yd. (1.9 m ³)
Capacity, Struck SAE	2.6 cu. yd. (2.0 m ³)	2.1 cu. yd. (1.6 m ³)
Bucket Weight	3,595 lb (1631 kg)	2,879 lb (1306 kg)
Bucket Width	105.9 in. (2690 mm)	100.4 in. (2550 mm)
Breakout Force, SAE J732C	17,557 lb (7964 kg)	18,104 lb (8212 kg)
Tipping Load, Straight	16,964 lb (7695 kg)	17,687 lb (8023 kg)
Tipping Load, 40-Degree Full Turn, SAE	14,202 lb (6442 kg)	14,905 lb (6761 kg)
Reach, 45-Degree Dump, 7 ft (2.13 m) Clearance	70.5 in. (1790 mm)	72.7 in. (1846 mm)
Reach, 45-Degree Discharge, Full Height	43.0 in. (1092 mm)	43.4 in. (1102 mm)
Dump Clearance, 45-Degree Full Height	117.2 in. (2977 mm)	120.6 in. (3063 mm)
Overall Length, Bucket on Ground	25 ft. 11 in. (7905 mm)	25 ft. 7 in. (7807 mm)
Loader Clearance Circle, Bucket in Carry Position	39 ft. 10 in. (12 151 mm)	39 ft. 4 in. (12 002 kg)
Operating Weight	28,836 lb (13 080 kg)	28,122 lb (12 756 kg)

High Lift Z-Bar with Quick Coupler and Construction Fork

Tine Length	48 in. (1220 mm)	60 in. (1525 mm)
Overall Length	26 ft. 8 in. (8139 mm)	27 ft. 8 in. (8442 mm)
Tipping Load, Straight (fork level, load centered 36 in. (914 mm) on tine)	13,379 lb (6069 kg)	12,651 lb (5739 kg)
Tipping Load, 40 deg. Full Turn (fork level, load centered 36 in (914 mm) on tine)	11,345 lb (5146 kg)	10,711 lb (4858 kg)
Operating Weight	27,249 lb (12 358 kg)	27,351 lb (12 404 kg)